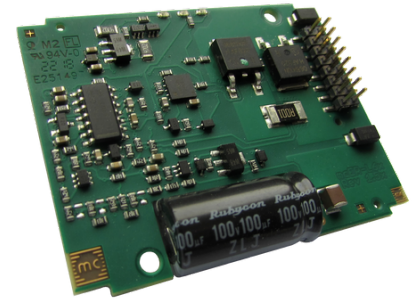


# Brake chopper

## mcER-L60-30-Modul

Article number: 1515423

 Certification:  \*1  
E475093


Picture similar

### Technical data

Power	
Electronic supply voltage $U_p^{*2}$	18..60 V
Electronic current consumption	typ. 10 mA
Max. braking peak current (certified UL)*3	60 A @ 60 V
Max. braking continuous current (certified UL)*3	7.5 A
On-Time / Off-Time (certified UL)*3	approx. 1 s / 90 s @ 60 A
Braking resistor	
Braking voltage $U_{Br}$	30 V
Braking resistor	min. 1 Ohm (external)
Maximum duty cycle	100 %
Integrated electrolytic capacitors	100 uF
Mechanical	
Size LxWxH	53 x 41 x 11 mm
Weight	14 g
Environment	
Protection class	IP00
Ambient temperature (operation) (certified UL)	-40..55 °C
Ambient temperature (operation) (not certified)	-40..70 °C
Ambient temperature (storage)	-40..85 °C
Rel. humidity (non-condensing)	5..90 %
Error recognition	
Short circuit braking resistor	yes
Braking resistor is missing / defective	yes
Overtemperature electronic	yes
Overtemperature braking resistor	no
Digital output	
Number	1 (/Error)
Continuous output current	typ. 10 mA
Load	resistive
Output voltage	$U_p$ (24V max.)
Signal type	positive switching

\*1 The certified performance data must be observed (see UL Instruction Note)

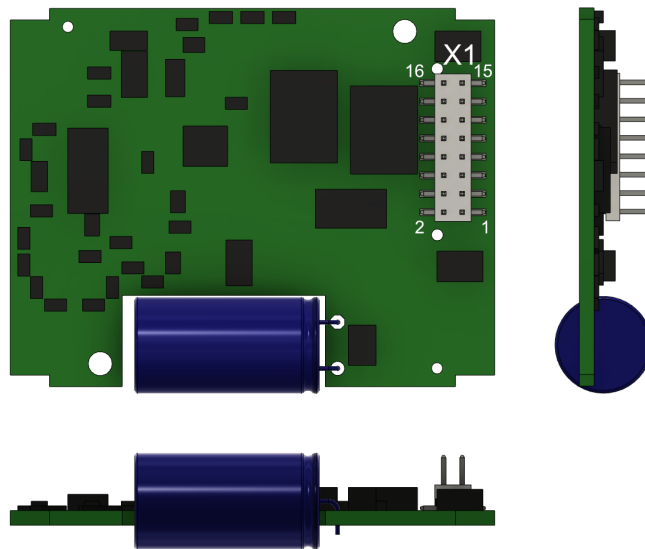
\*2 No reverse polarity protection, the destruction limit is at overvoltage of  $\geq 100V$ 

\*3 ambient temperature 55 °C

Additional technical data are available in mcManual.



## Scheme



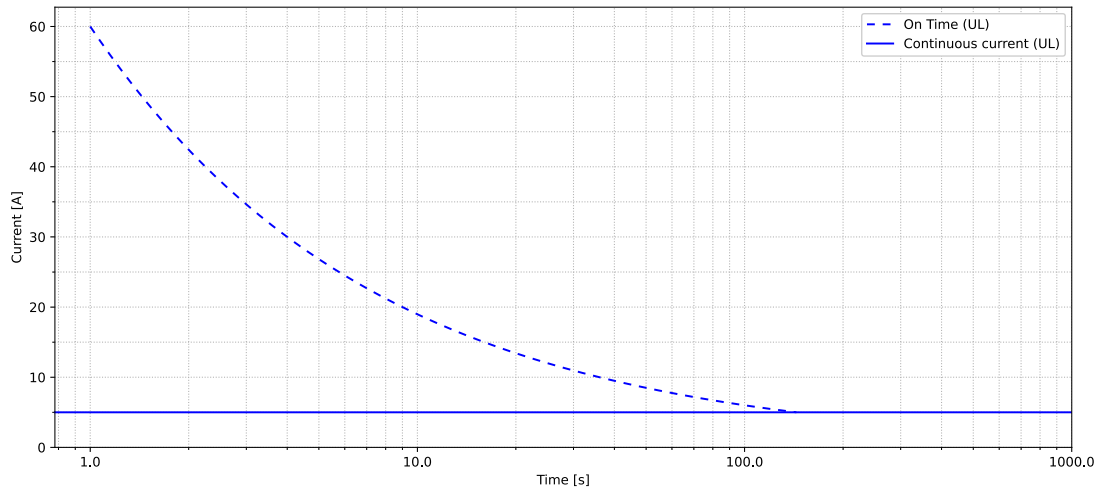
## Terminal assignment

X1	Supply	
1	GND	Ground for power supply voltage
2	GND	Ground for power supply voltage
3	GND	Ground for power supply voltage
4	GND	Ground for power supply voltage
5	+Up	Power supply voltage
6	GND	Ground for power supply voltage
7	+Up	Power supply voltage
8	+Up	Power supply voltage
9	+Up	Power supply voltage
10	+Up	Power supply voltage
11	/Error	Error output
12	Rd	Braking resistor
13	Rd	Braking resistor
14	Rd	Braking resistor
15	Rd	Braking resistor
16	Rd	Braking resistor

## Diagrams

### miControl®

### mcER-L60-30-M



ambient temperature 55°C  
power supply voltage Up 60V  
continuous current 5A

Copyright 2023© by miControl® - Modifications and errors excepted - 1.00.00.00

